



# Potomac Yard Metro Station Update

Del Ray Citizens Association

March 11, 2015



# Overview

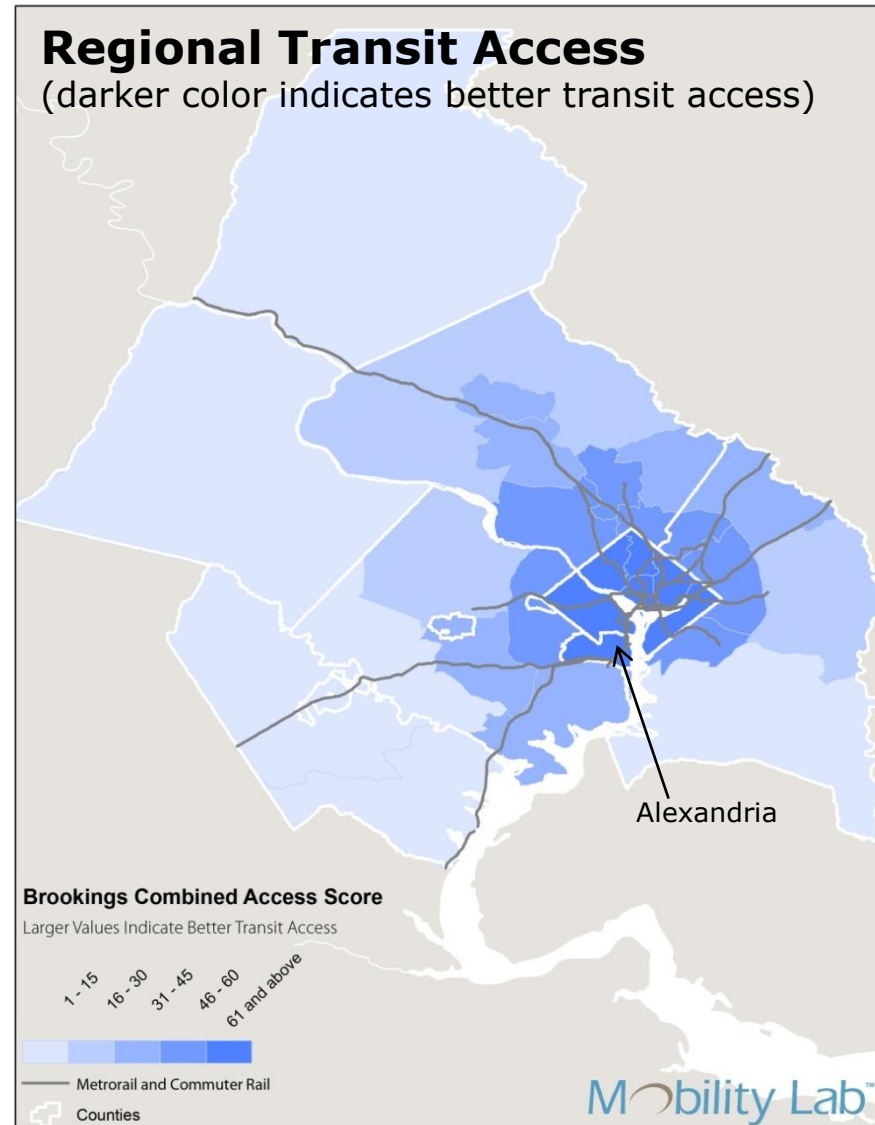
- Overview
- Why a Metro Station?
- NEPA Process & DEIS Status
- Financial Feasibility
- Key Impact Areas
- Planned Outreach
- Next Steps

*NEPA: National Environmental Policy Act*

*DEIS: Draft Environmental Impact Statement*

# Alexandria in the Region

- Located in the core of the Washington region
- Good access to jobs and other opportunities
- Highly desirable place to live, work, and play
- Continued regional growth = continued development pressure
- How are we responding?



# Potomac Yard





# North Potomac Yard Small Area Plan

- Increased density must be supported by appropriate infrastructure, such as open space and parks, retail, schools, and **transit**





# Metrorail Station



# NEPA Process

- Why NEPA?
- What is NEPA?
- Who are our partners?
  - **Federal Transit Administration (FTA)**
  - **National Park Service (NPS)**
  - **Washington Metropolitan Area Transit Authority (WMATA)**



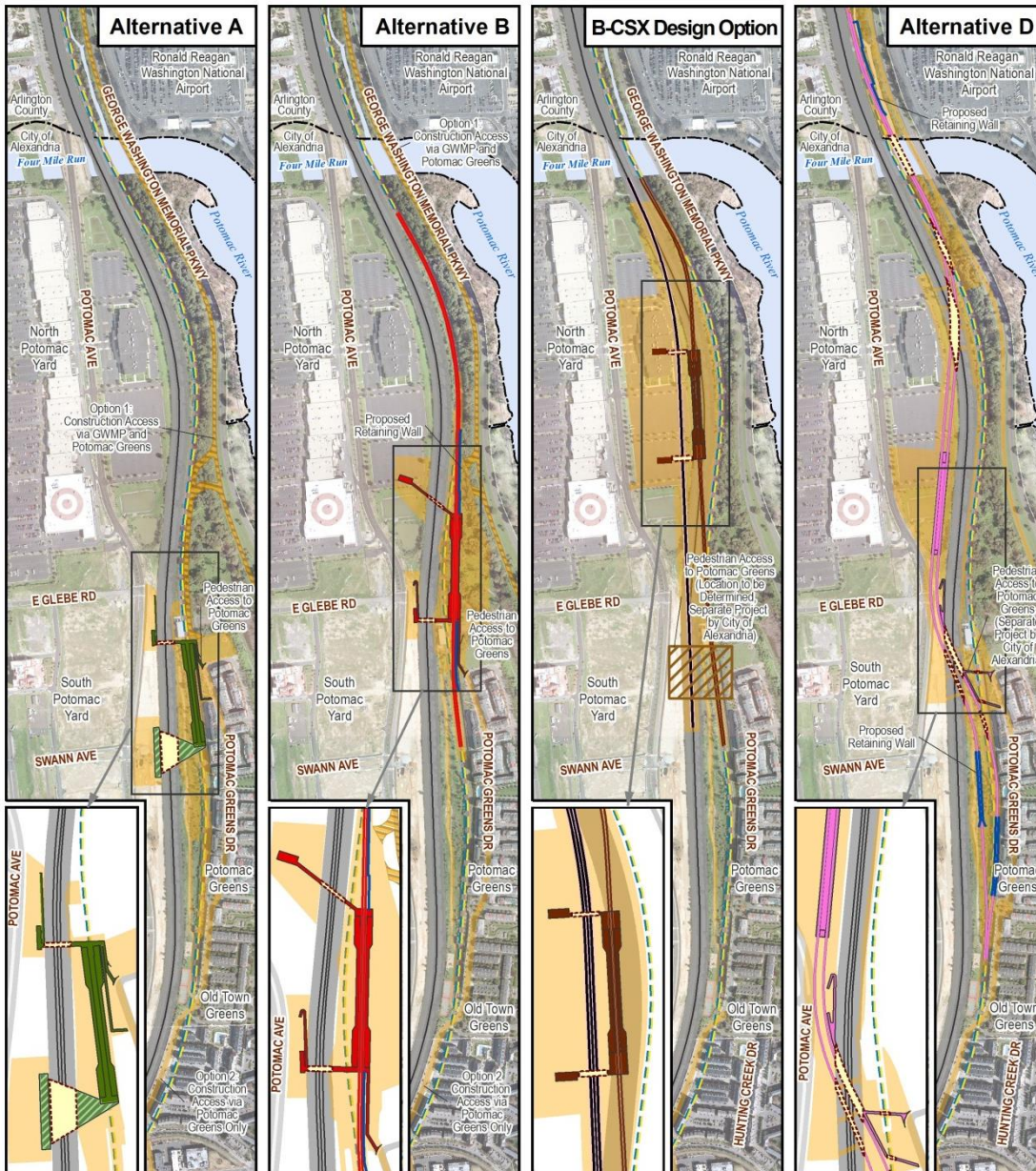
U.S. Department  
of Transportation  
**Federal Transit  
Administration**



*NEPA: National Environmental Policy Act*



# Status of DEIS

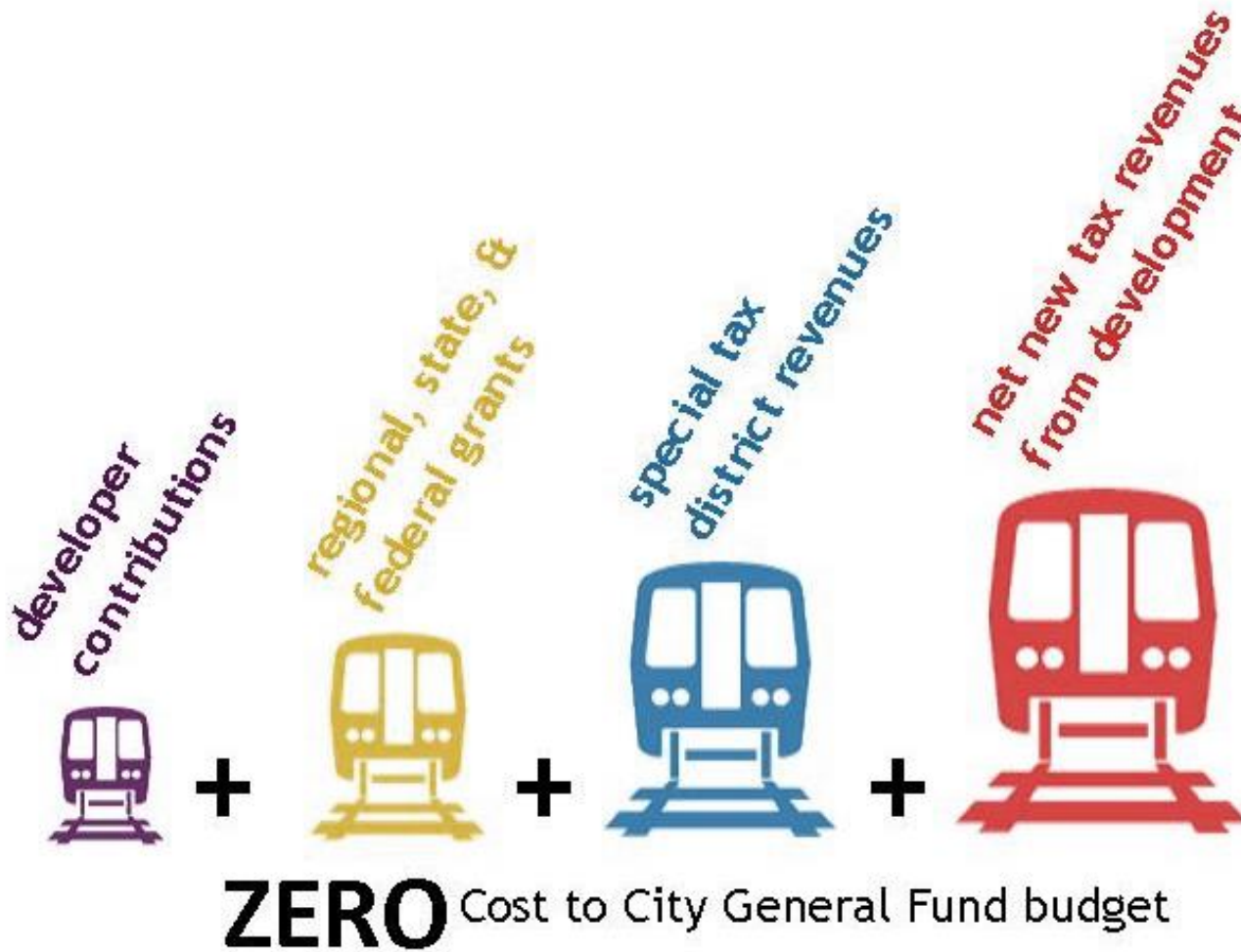


- DEIS submitted to FTA & NPS for final review
- Anticipated public release Q1 2015

*DEIS: Draft Environmental Impact Statement*

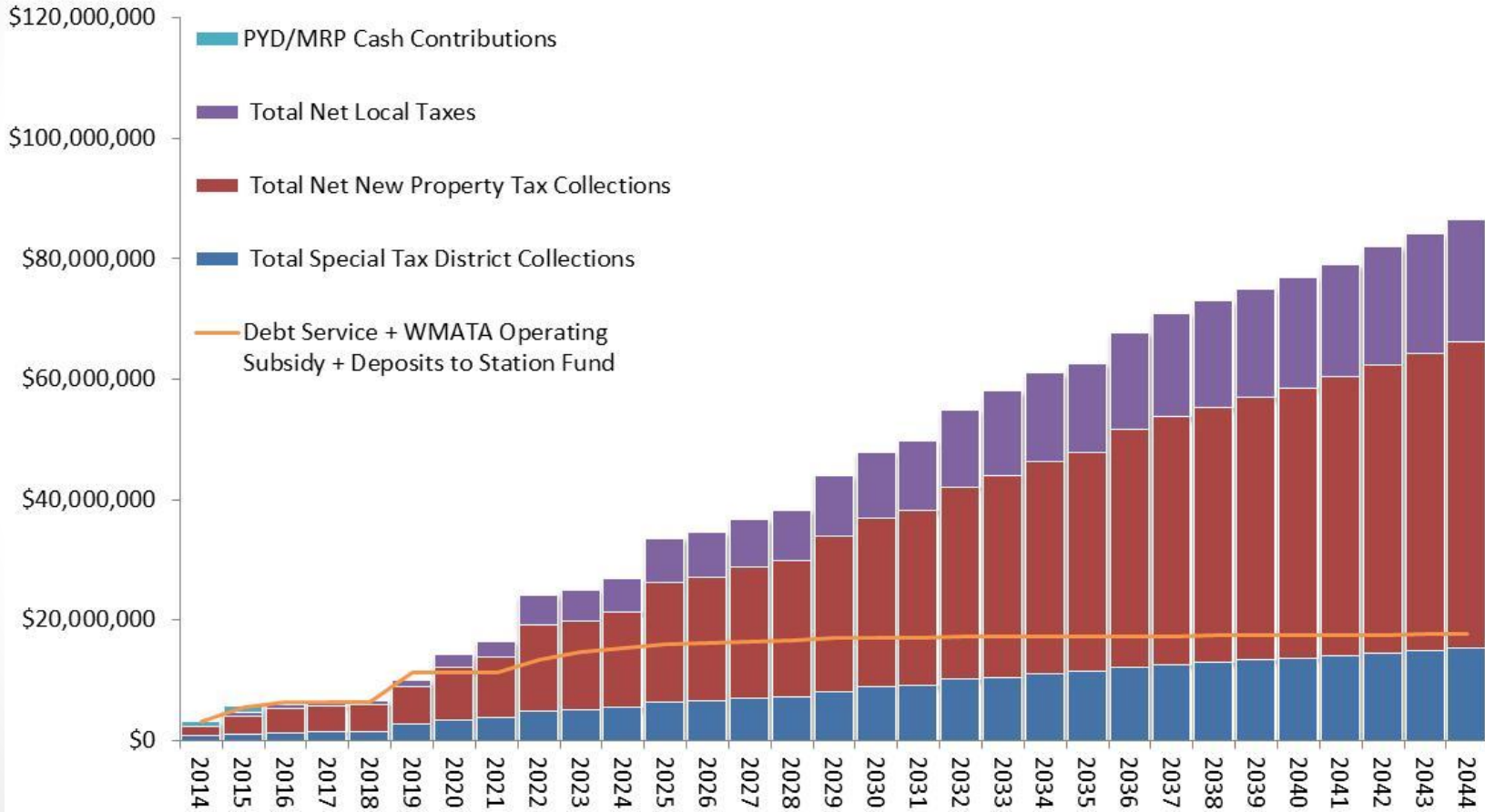


# Funding Sources



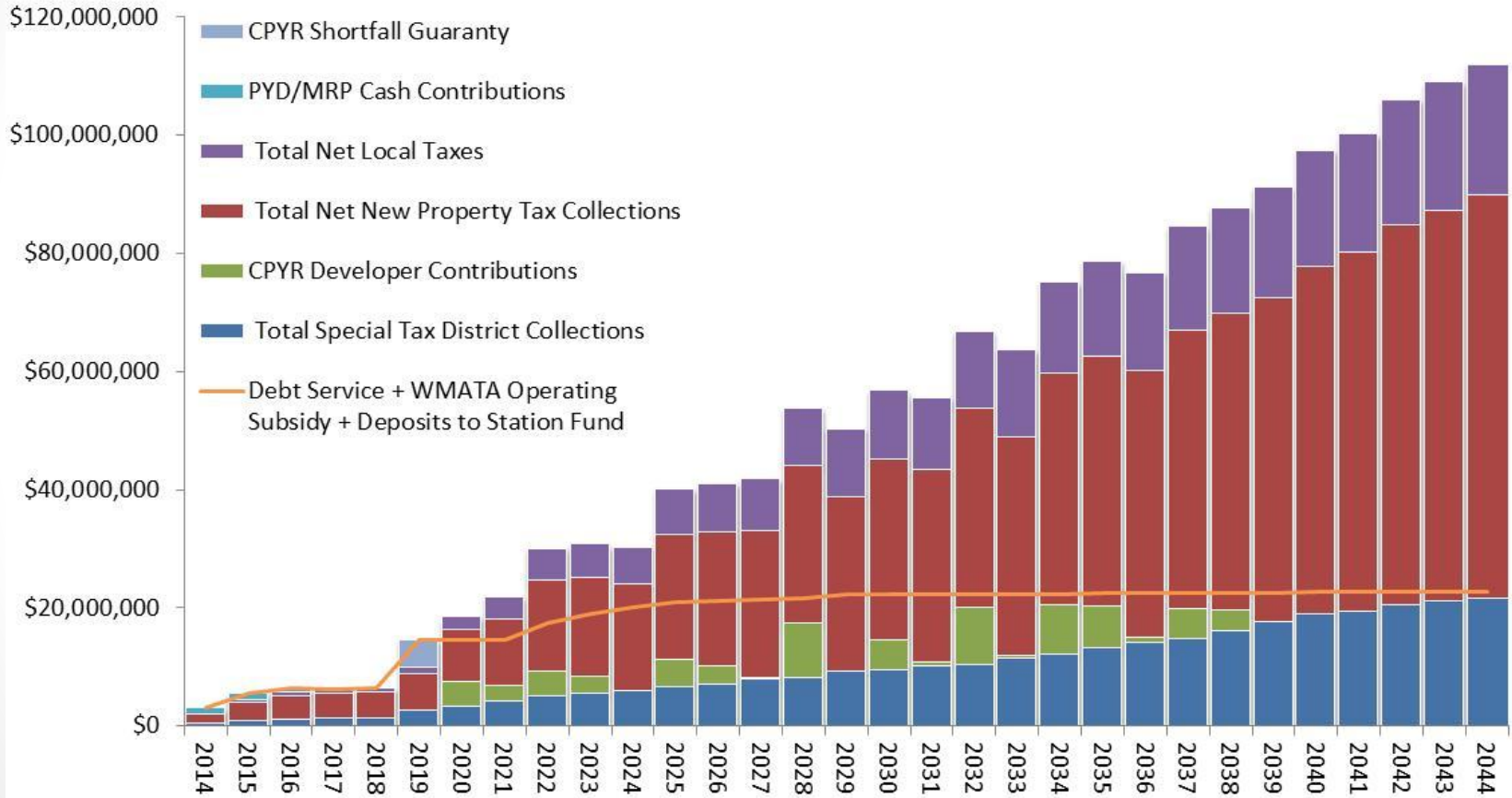


# Cash Flow – Alternative A



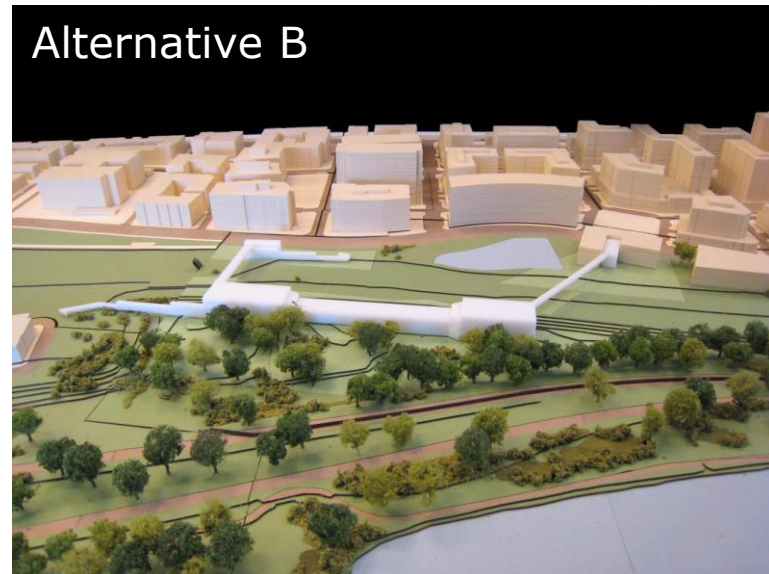


# Cash Flow – Alternative B



# Key Impact Areas to Consider

- Noise & Vibration
- Construction Access
- Neighborhoods
- Local Plans
- Transportation
- Visual Resources
- Wetlands
- Secondary & Cumulative Effects







# Overview of Outreach Plans

| Phase  | Timeframe          |
|--|--------------------|
| Pre-DEIS Release<br>• Overview of key issues                 | Winter 2015        |
| DEIS Release<br>• Detailed review of DEIS                    | Winter/Spring 2015 |
| Staff Recommendation<br>• Discussion of staff recommendation | Spring 2015        |
| Preferred Alternative  | Spring 2015        |



# Opportunities for Comment on the DEIS

- In writing:
  - Emails to [comments@potomacyardmetro.com](mailto:comments@potomacyardmetro.com)
  - Letters to address provided in DEIS
  - Comment cards at public meetings
    - Workshops
    - Board and Commission meetings
- In person:
  - Public hearing
  - WMATA/NEPA public hearing

*NEPA: National Environmental Policy Act*

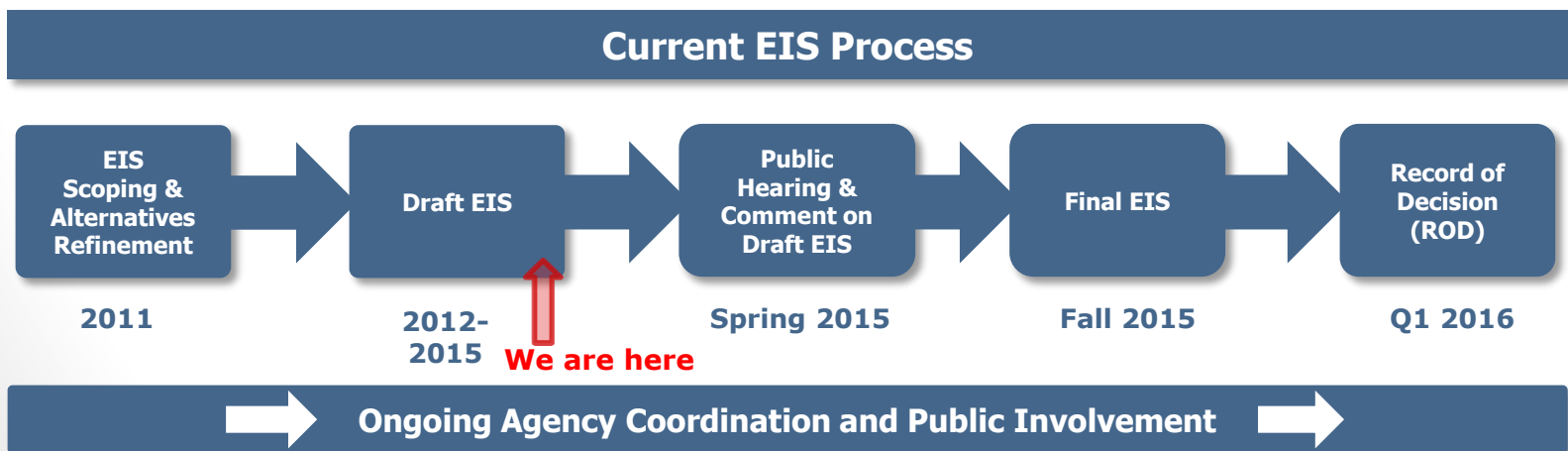
*DEIS: Draft Environmental Impact Statement*

*WMATA: Washington Metropolitan Area Transit Authority*



# Next Steps

- Final review and signoff of DEIS by FTA and NPS (Q1 2015)
- Public release of DEIS (Q1 2015)
- Preferred alternative decision by City Council (Q2 2015)
- Complete Final EIS (Q4 2015)
- Record of Decision (Q1 2016)





# Thank You

**For more information, visit:  
[www.alexandriava.gov/PotomacYard](http://www.alexandriava.gov/PotomacYard)**